



Tufănele Street no. 1, Craiova – Dolj county
zip code 200767

No. Trade Register: J16/1210/30.04.1993

CUI/CIF: RO 4175676

Social Capital: 58.016.571 lei

Phone/Fax: +40 251-419.398/+40 251-419.340

www.sifolt.ro

THE COMPANY

MAY 2017

S.I.F. OLTENIA S.A. operates as a joint stock company, self-administered, fixed capital, entirely private.

The social capital amounts to 58,016,571 LEI divided into ordinary nominative shares with a nominal value of 0.10 LEI. Company's shares are traded on Bucharest Stock Exchange, Main segment, Premium category.

BSE symbol: SIF5

ISIN: ROSIFEACNOR4

Depositing activities – stipulated by the laws and F.S.A. Regulations (former RNSC) - have been provided by Raiffeisen Bank S.A., based on the depository contract.

The Shareholder Register of S.I.F. OLTENIA S.A is kept by CENTRAL DEPOSITORY S.A. Bucharest.

S.I.F. OLTENIA S.A is listed on Bucharest Stock Exchange starting from 01/11/1999.

Strategic objectives:

- continuing the shares portfolio restructuring;
- investment policy;
- organizational development;
- implementation of corporate governance principles.

SIF5

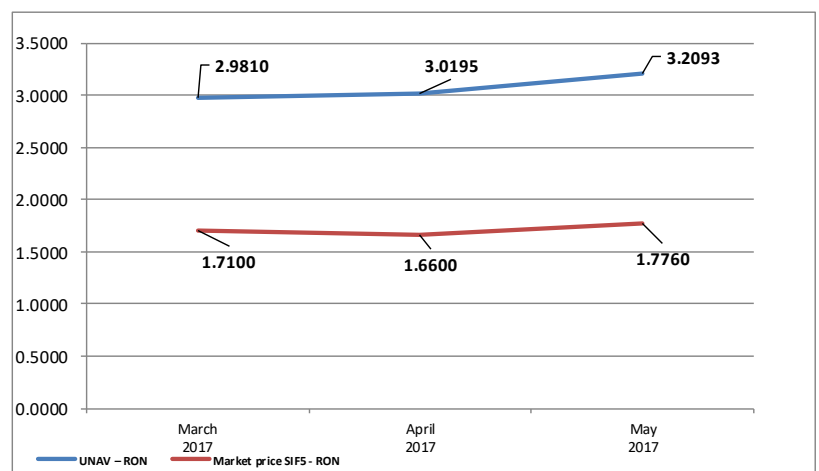
31/05/2017

- RON -

Share capital	58,016,571
Nominal value per share	0.10
Capitalization	1,030,374,308
Total assets	1,919,296,503
Net assets	1,861,930,401

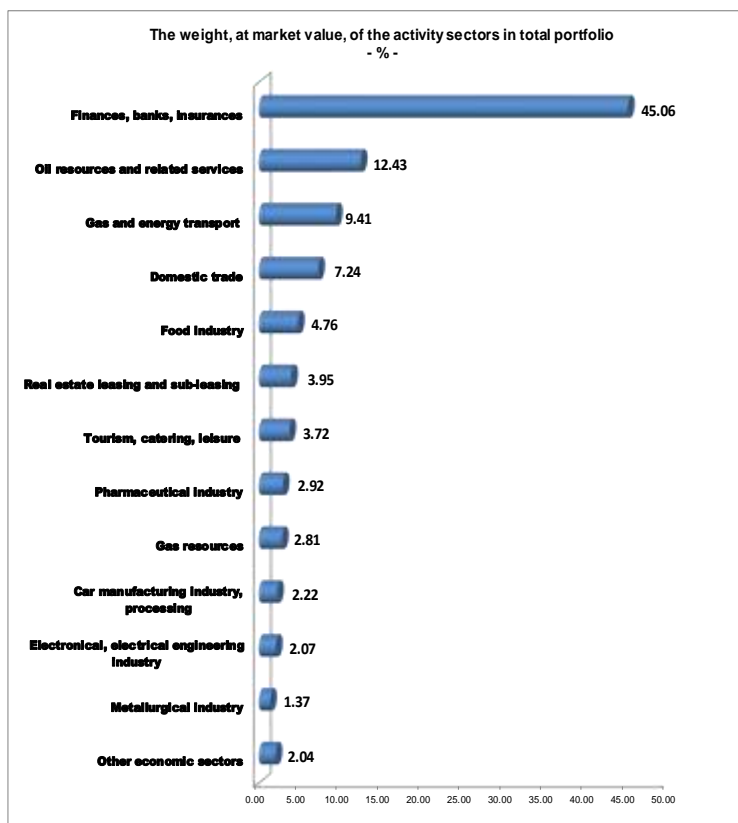


	March 2017	April 2017	May 2017
UNAV	2.9810	3.0195	3.2093
- RON -			
Market price	1.7100	1.6600	1.7760
- RON -			
Dicount	-43	-45	-45
- % -			



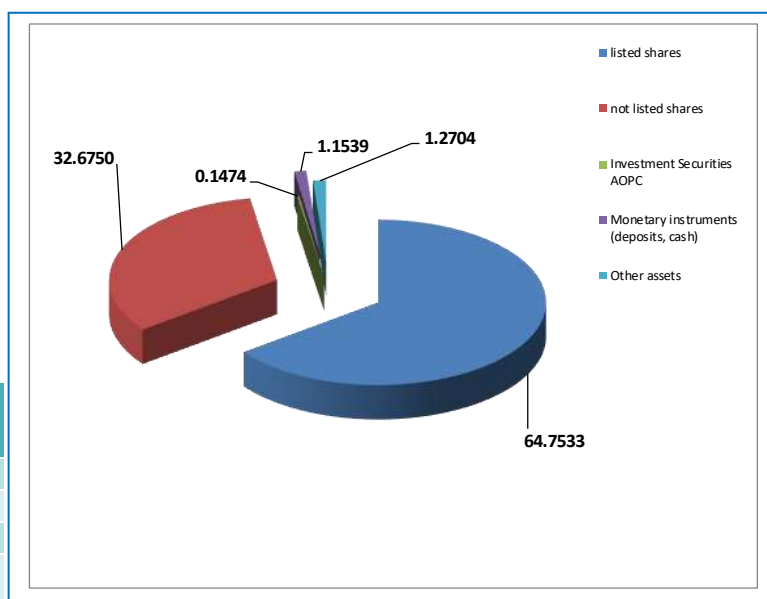
THE PORTFOLIO STRUCTURE

The weight, at market value, of the activity sectors in total portfolio (%)	
Finances, banks, insurances	45.06
Oil resources and related services	12.43
Gas and energy transport	9.41
Domestic trade	7.24
Food industry	4.76
Real estate leasing and sub-leasing	3.95
Tourism, catering, leisure	3.72
Pharmaceutical industry	2.92
Gas resources	2.81
Car manufacturing industry, processing	2.22
Electronical, electrical engineering industry	2.07
Metallurgical industry	1.37
Other economic sectors	2.04



ASSETS STRUCTURE

Weight in the total value of assets (%)	
Shares, out of which:	
listed shares	64.7533
not listed shares	32.6750
Investment Securities AOPC	0.1474
Monetary instruments (deposits, cash)	1.1539
Other assets	1.2704



	No. sc	Market value of packages of shares	
		- RON -	- % -
ccs listed on B.V.B.	17	943,370,319	50.45
ccs listed on AERO	11	261,870,478	14.00
ccs listed and not traded	3	37,567,810	2.01
ccs closed	15	627,129,760	33.54
ccs in reorganization and judicial liquidation	5	-	-
TOTAL	51	1,869,938,367	100.00

TOP 10 COMPANIES OF THE PORTFOLIO

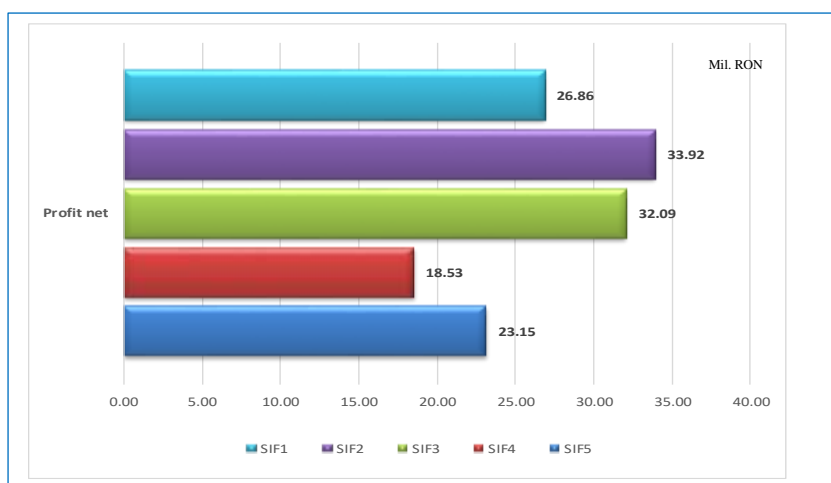
	Weight in the issuer`s share capital (%)	Weight in the SIF total asset (%)
BANCA COMERCIALĂ ROMÂNĂ	6.2973	25.3398
OMV PETROM S.A. București	1.2455	12.1119
B.R.D. Groupe Societe Generale	2.2022	10.3789
BANCA TRANSILVANIA S.A.	1.1228	6.3987
MERCUR S.A. Craiova	97.8593	5.9229
C.N.T.E.E. TRANSELECTRICA S.A. București	3.8359	4.8639
ARGUS S.A. Constanța	86.2050	4.4677
S.N.T.G.N. TRANSGAZ S.A. Mediaș	1.5617	4.3015
ANTIBIOTICE S.A. Iași	14.2524	2.8416
S.N.G.N. ROMGAZ S.A.	0.4026	2.7408

May 2017	SIF 1	SIF2	SIF3	SIF 4	SIF 5
Total Asset (Mil.RON)	2,241.99	2,006.43	1,068.26	1,374.39	1,919.30

May 2017	SIF 1	SIF2	SIF3	SIF 4	SIF 5
Net Asset (Mil.RON)	2,220.37	1,836.20	953.39	1,275.62	1,861.93

May 2017	SIF 1	SIF2	SIF3	SIF 4	SIF 5
Unitary net asset (RON)	4.2864	1.7964	0.4365	1.5806	3.2093

May 2017	SIF 1	SIF2	SIF3	SIF 4	SIF 5
Profit net (Mil. RON)	26.86	33.92	32.09	18.53	23.15



The strategy of S.I.F. OLTENIA S.A. regarding the investment policy complies with the prudential principles of Regulation no. 15/2004 of F.S.A. (former R.N.S.C.) referred to in art. 187, 188 and 275.

The above information concerning the portfolio are calculated based on VAN (net asset value). The price of shares and the incomes generated by them may fluctuate and there is the possibility not to recover the amount invested. Company's past performance is no guarantee of future performance. S.I.F. Oltenia S.A. provides quarterly, half yearly and annual reports, and publishes them on the internet page at [www.sifolt.ro/Investor Info/Reports/Continuous reports](http://www.sifolt.ro/Investor%20Info/Reports/Continuous%20reports). This is a brief summary destined exclusively to existing shareholders and will not be the basis for taking investments decisions.