



Tușănele Street no. 1, Craiova – Dolj county
zip code 200767

No. Trade Register: J16/1210/30.04.1993

CUI/CIF: RO 4175676

Social Capital: 58.016.571 lei

Phone/Fax: +40 251-419.398/+40 251-419.340

www.sifolt.ro

THE COMPANY

FEBRUARY 2017

S.I.F. OLTENIA S.A. operates as a joint stock company, self-administered, fixed capital, entirely private.

The social capital amounts to 58,016,571 LEI divided into ordinary nominative shares with a nominal value of 0.10 LEI. Company's shares are traded on Bucharest Stock Exchange, Main segment, Premium category.

BSE symbol: SIF5

ISIN: ROSIFEACNOR4

Strategic objectives:

- continuing the shares portfolio restructuring;
- investment policy;
- organizational development;
- implementation of corporate governance principles.



SIF5 28/02/2017

- RON-

Depositing activities – stipulated by the laws and F.S.A. Regulations (former RNSC) - have been provided by Raiffeisen Bank S.A., based on the depository contract.

The Shareholder Register of S.I.F. OLTENIA S.A is kept by CENTRAL DEPOSITORY S.A. Bucharest.

S.I.F. OLTENIA S.A is listed on Bucharest Stock Exchange starting from 01/11/1999.

Company management:

Senior management:

Chairman / General Manager -

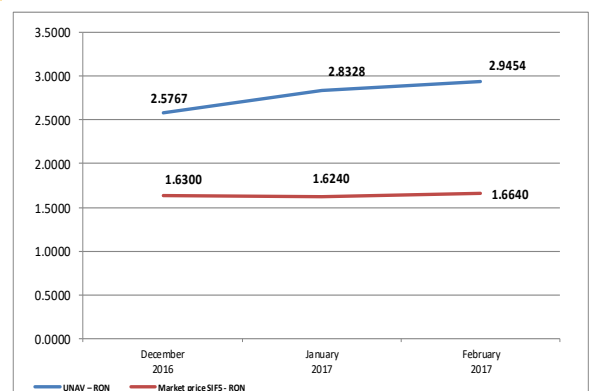
Tudor CIUREZU

Vice-Chairman /Deputy General Manager -

Anina RADU

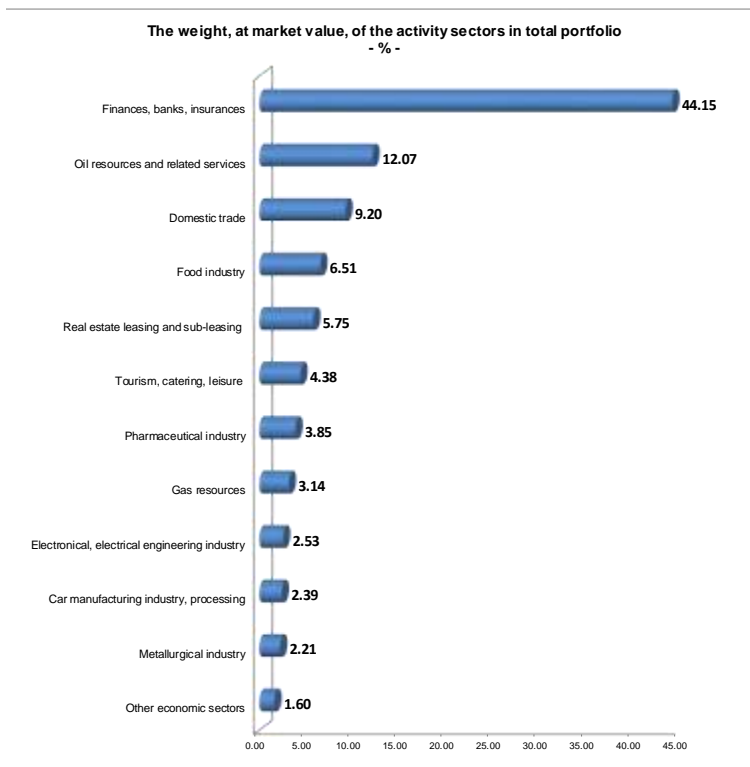
Share capital	58,016,571
Nominal value per share	0.10
Capitalization	965,395,748
Total assets	1,771,243,871
Net assets	1,708,809,110

	December 2016	January 2017	FEBRUARY 2017
UNAV	2.5767	2.8328	2.9454
- RON -			
Market price	1.6300	1.6240	1.6640
- RON -			
Dicout	-37	-43	-44
- % -			



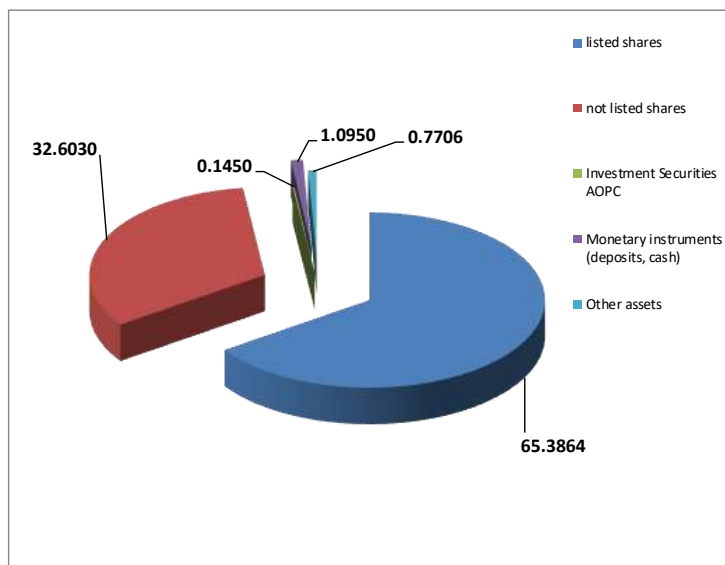
THE PORTFOLIO STRUCTURE

The weight, at market value, of the activity sectors in total portfolio (%)	
Finances, banks, insurances	44.15
Oil resources and related services	12.07
Gas and energy transport	9.20
Domestic trade	6.51
Food industry	5.75
Real estate leasing and sub-leasing	4.38
Tourism, catering, leisure	3.85
Pharmaceutical industry	3.14
Gas resources	2.53
Electronical, electrical engineering industry	2.39
Car manufacturing industry, processing	2.21
Metallurgical industry	1.60
Other economic sectors	2.22



ASSETS STRUCTURE

Weight in the total value of assets (%)	
Shares, out of which:	
listed shares	65.3864
not listed shares	32.6030
Investment Securities AOPC	0.1450
Monetary instruments (deposits, cash)	1.0950
Other assets	0.7706

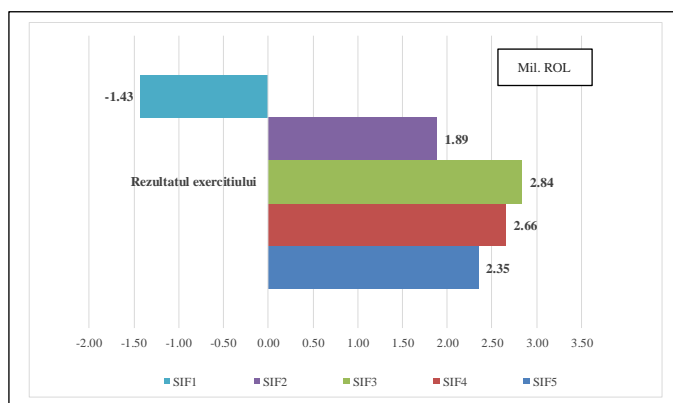


	No. sc	Market value of packages of shares	
		- RON -	- % -
ccs listed on B.V.B.	17	866,220,291	49.91
ccs listed on AERO	9	260,474,150	15.01
ccs listed and not traded	5	31,458,719	1.81
ccs closed	15	577,478,807	33.27
ccs in reorganization and judicial liquidation	5	-	-
TOTAL	51	1,735,631,967	100.00

TOP 10 COMPANIES OF THE PORTFOLIO

	Weight in the issuer's share capital (%)	Weight in the SIF total asset (%)
BANCA COMERCIALĂ ROMÂNĂ	6.2973	24.6684
OMV PETROM S.A. București	1.2367	11.8250
B.R.D. Groupe Societe Generale	2.2022	10.3800
BANCA TRANSILVANIA S.A.	1.1228	6.2402
ARGUS S.A. Constanța	86.2050	5.4506
C.N.T.E.E. TRANSELECTRICA S.A. București	3.8359	5.3180
MERCUR S.A. Craiova	97.8593	5.2146
S.N.T.G.N. TRANSGAZ S.A. Mediaș	1.5362	3.6966
ANTIBIOTICE S.A. Iași	14.2524	3.0791
S.N.G.N. ROMGAZ S.A.	0.4026	2.4793

February 2017	SIF 1	SIF2	SIF3	SIF 4	SIF 5
Total Asset (Mil. RON)	2,073.30	1,839.33	1,001.12	1,324.50	1,771.24
February 2017	SIF 1	SIF2	SIF3	SIF 4	SIF 5
Net Asset (Mil. RON)	2,050.26	1,735.46	935.97	1,221.67	1,708.81
February 2017	SIF 1	SIF2	SIF3	SIF 4	SIF 5
Unitary net asset (RON)	3.9580	1.6975	0.4285	1.5138	2.9454
February 2017	SIF 1	SIF2	SIF3	SIF 4	SIF 5
Profit net (Mil. RON)	- 1.43	1.89	2.84	2.66	2.35



The strategy of S.I.F. OLTENIA S.A. regarding the investment policy complies with the prudential principles of Regulation no. 15/2004 of F.S.A. (former R.N.S.C.) referred to in art. 187, 188 and 275.

The above information concerning the portfolio are calculated based on VAN (net asset value). The price of shares and the incomes generated by them may fluctuate and there is the possibility not to recover the amount invested. Company's past performance is no guarantee of future performance. S.I.F. Oltenia S.A. provides quarterly, half yearly and annual reports, and publishes them on the internet page at www.sifolt.ro/Investor_Info/Reports/Continuous_reports. This is a brief summary destined exclusively to existing shareholders and will not be the basis for taking investments decisions.